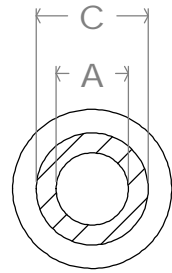
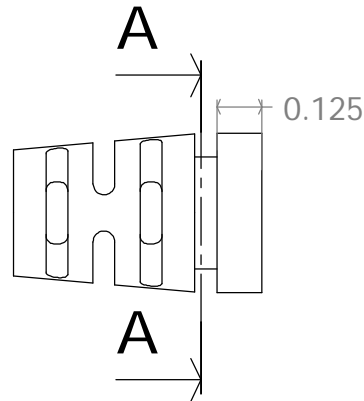
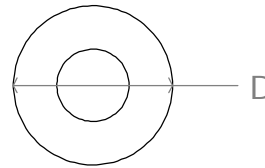


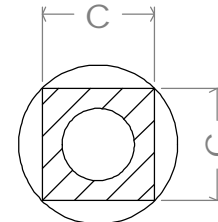
| REVISIONS |      |             |  | DATE | APPROVED |
|-----------|------|-------------|--|------|----------|
| ZONE      | REV. | DESCRIPTION |  |      |          |
|           |      |             |  |      |          |



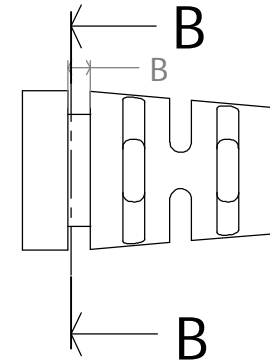
A-A  
Round Slot



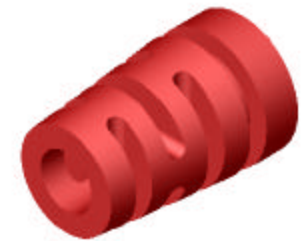
Front View



B-B  
Square Slot



| Style   | A       | B             | C       | D       | Color | Style   | A       | B             | C             | D       | Color |
|---------|---------|---------------|---------|---------|-------|---------|---------|---------------|---------------|---------|-------|
| 1461080 | - 0.100 | - 0.062/0.125 | - 0.205 | - 0.330 | - 0   | 1461080 | - 0.100 | - 0.062/0.125 | - .205 X .205 | - 0.330 | - 0   |
| 1461080 | - 0.125 | - 0.062/0.125 | - 0.205 | - 0.330 | - 0   | 1461080 | - 0.125 | - 0.062/0.125 | - .205 X .205 | - 0.330 | - 0   |
| 1461080 | - 0.150 | - 0.062/0.125 | - 0.310 | - 0.440 | - 0   | 1461080 | - 0.150 | - 0.062/0.125 | - .310 X .310 | - 0.440 | - 0   |
| 1461080 | - 0.175 | - 0.062/0.125 | - 0.310 | - 0.440 | - 0   | 1461080 | - 0.175 | - 0.062/0.125 | - .310 X .310 | - 0.440 | - 0   |
| 1461080 | - 0.200 | - 0.062/0.125 | - 0.310 | - 0.440 | - 0   | 1461080 | - 0.200 | - 0.062/0.125 | - .310 X .310 | - 0.440 | - 0   |
| 1461080 | - 0.225 | - 0.062/0.125 | - 0.310 | - 0.440 | - 0   | 1461080 | - 0.225 | - 0.062/0.125 | - .310 X .310 | - 0.440 | - 0   |
| 1461080 | - 0.250 | - 0.062/0.125 | - 0.310 | - 0.440 | - 0   | 1461080 | - 0.250 | - 0.062/0.125 | - .310 X .310 | - 0.440 | - 0   |
| 1461080 | - 0.275 | - 0.062/0.125 | - 0.460 | - 0.651 | - 0   | 1461080 | - 0.275 | - 0.062/0.125 | - .460 X .460 | - 0.651 | - 0   |
| 1461080 | - 0.300 | - 0.062/0.125 | - 0.460 | - 0.651 | - 0   | 1461080 | - 0.300 | - 0.062/0.125 | - .460 X .460 | - 0.651 | - 0   |
| 1461080 | - 0.350 | - 0.062/0.125 | - 0.460 | - 0.651 | - 0   | 1461080 | - 0.350 | - 0.062/0.125 | - .460 X .460 | - 0.651 | - 0   |
| 1461080 | - 0.400 | - 0.062/0.125 | - 0.460 | - 0.651 | - 0   | 1461080 | - 0.400 | - 0.062/0.125 | - .460 X .460 | - 0.651 | - 0   |
| 1461080 | - 0.450 | - 0.062/0.125 | - 0.610 | - 0.863 | - 0   | 1461080 | - 0.450 | - 0.062/0.125 | - .610 X .610 | - 0.863 | - 0   |
| 1461080 | - 0.500 | - 0.062/0.125 | - 0.610 | - 0.863 | - 0   | 1461080 | - 0.500 | - 0.062/0.125 | - .610 X .610 | - 0.863 | - 0   |
| 1461080 | - 0.550 | - 0.062/0.125 | - 0.610 | - 0.863 | - 0   | 1461080 | - 0.550 | - 0.062/0.125 | - .610 X .610 | - 0.863 | - 0   |
| 1461080 | - 0.600 | - 0.062/0.125 | - 0.810 | - 1.150 | - 0   | 1461080 | - 0.600 | - 0.062/0.125 | - .810 X .810 | - 1.150 | - 0   |



Dimensions are subject to change without notice.

**PROPRIETARY AND CONFIDENTIAL**

THE INFORMATION CONTAINED IN THIS DRAWING IS THE SOLE PROPERTY OF ISC ENGINEERING. ANY REPRODUCTION IN PART OR AS A WHOLE WITHOUT THE WRITTEN PERMISSION OF ISC ENGINEERING IS PROHIBITED.

DIMENSIONS ARE IN INCHES  
TOLERANCES: +/- .005"  
FRACTIONAL ±  
ANGULAR: MACH ± BEND ±  
TWO PLACE DECIMAL ±  
THREE PLACE DECIMAL ±

MATERIAL  
Black PVC, UL94-VO, C73  
FINISH  
ISC Std

DO NOT SCALE DRAWING

|           | NAME     | DATE     |
|-----------|----------|----------|
| DRAWN     | R FIERRO | 04/14/03 |
| CHECKED   |          |          |
| ENG APPR. |          |          |
| MFG APPR. |          |          |
| Q.A.      |          |          |
| COMMENTS: |          |          |

ISC Engineering  
157 Stare St. Pomona, CA 91767  
Ph: 909-596-3315 Fax: 909-596-3335  
www.iscengineering.com  
www.overmoldtooling.com

**Strain Relief  
Round, Multiflex Design**

|                  |                            |                  |
|------------------|----------------------------|------------------|
| SIZE<br><b>A</b> | DWG. NO.<br><b>1461080</b> | REV.<br><b>A</b> |
| SCALE:           | WEIGHT:                    | SHEET 1 OF 1     |