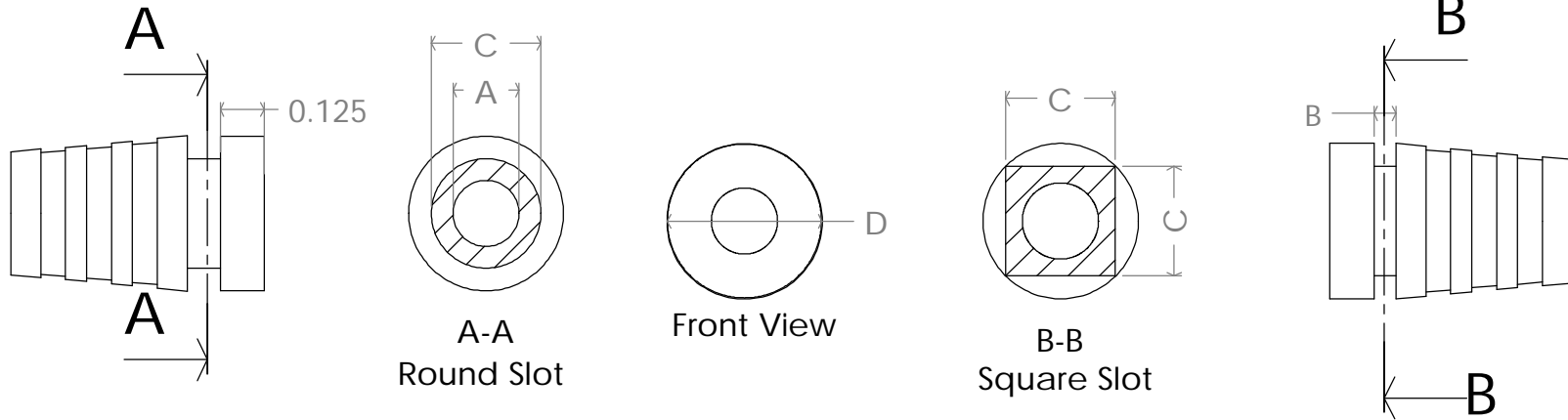
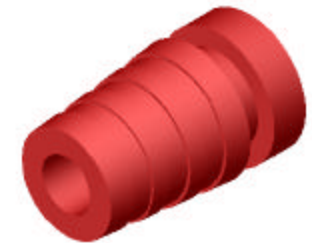


ZONE		REV.	REVISIONS DESCRIPTION	DATE	APPROVED



Style	A	B	C	D	Color	Style	A	B	C	D	Color
1461040	- 0.100	- 0.062/0.125	- 0.205	- 0.330	- 0	1461040	- 0.100	- 0.062/0.125	- .205 X .205	- 0.330	- 0
1461040	- 0.125	- 0.062/0.125	- 0.205	- 0.330	- 0	1461040	- 0.125	- 0.062/0.125	- .205 X .205	- 0.330	- 0
1461040	- 0.150	- 0.062/0.125	- 0.310	- 0.440	- 0	1461040	- 0.150	- 0.062/0.125	- .310 X .310	- 0.440	- 0
1461040	- 0.175	- 0.062/0.125	- 0.310	- 0.440	- 0	1461040	- 0.175	- 0.062/0.125	- .310 X .310	- 0.440	- 0
1461040	- 0.200	- 0.062/0.125	- 0.310	- 0.440	- 0	1461040	- 0.200	- 0.062/0.125	- .310 X .310	- 0.440	- 0
1461040	- 0.225	- 0.062/0.125	- 0.310	- 0.440	- 0	1461040	- 0.225	- 0.062/0.125	- .310 X .310	- 0.440	- 0
1461040	- 0.250	- 0.062/0.125	- 0.310	- 0.440	- 0	1461040	- 0.250	- 0.062/0.125	- .310 X .310	- 0.440	- 0
1461040	- 0.275	- 0.062/0.125	- 0.460	- 0.651	- 0	1461040	- 0.275	- 0.062/0.125	- .460 X .460	- 0.651	- 0
1461040	- 0.300	- 0.062/0.125	- 0.460	- 0.651	- 0	1461040	- 0.300	- 0.062/0.125	- .460 X .460	- 0.651	- 0
1461040	- 0.350	- 0.062/0.125	- 0.460	- 0.651	- 0	1461040	- 0.350	- 0.062/0.125	- .460 X .460	- 0.651	- 0
1461040	- 0.400	- 0.062/0.125	- 0.460	- 0.651	- 0	1461040	- 0.400	- 0.062/0.125	- .460 X .460	- 0.651	- 0
1461040	- 0.450	- 0.062/0.125	- 0.610	- 0.863	- 0	1461040	- 0.450	- 0.062/0.125	- .610 X .610	- 0.863	- 0
1461040	- 0.500	- 0.062/0.125	- 0.610	- 0.863	- 0	1461040	- 0.500	- 0.062/0.125	- .610 X .610	- 0.863	- 0
1461040	- 0.550	- 0.062/0.125	- 0.610	- 0.863	- 0	1461040	- 0.550	- 0.062/0.125	- .610 X .610	- 0.863	- 0
1461040	- 0.600	- 0.062/0.125	- 0.810	- 1.150	- 0	1461040	- 0.600	- 0.062/0.125	- .810 X .810	- 1.150	- 0



Dimensions are subject to change without notice.

**PROPRIETARY AND CONFIDENTIAL**

THE INFORMATION CONTAINED IN THIS DRAWING IS THE SOLE PROPERTY OF ISC ENGINEERING. ANY REPRODUCTION IN PART OR AS A WHOLE WITHOUT THE WRITTEN PERMISSION OF ISC ENGINEERING IS PROHIBITED.

DIMENSIONS ARE IN INCHES  
TOLERANCES: +/- .005  
FRACTIONAL ±  
ANGULAR: MACH ± BEND ±  
TWO PLACE DECIMAL ±  
THREE PLACE DECIMAL ±

MATERIAL:  
Black PVC, UL94-VO,C73

FINISH  
ISC Std

DO NOT SCALE DRAWING

	NAME	DATE
DRAWN	R FIERRO	04/14/03
CHECKED		
ENG APPR.		
MFG APPR.		
Q.A.		
COMMENTS:		

ISC Engineering  
157 Stare St. Pomona, CA 91767  
Ph: 909-596-3315 Fax: 909-596-3335  
www.iscengineering.com  
www.overmoldtooling.com

**Strain Relief  
Round, Solid Rib Design**

SIZE <b>A</b>	DWG. NO. <b>1461040</b>	REV. <b>A</b>
SCALE:	WEIGHT:	SHEET 1 OF 1