



ROUND

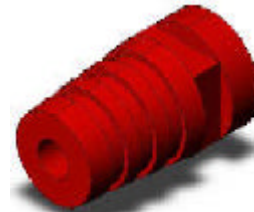
SOLID-RIB with ROUND SLOT

SOLID-RIB with SQUARE SLOT



[SPEC INFORMATION](#)

click above for complete specification



STYLE	HOLE DIA.	SLOT WIDTH	SLOT SIZE	FLANGE SIZE	COLOR		STYLE	HOLE DIA.	SLOT WIDTH	SLOT SIZE	FLANGE SIZE	COLOR
1461040	- .100	- .062	- .205	- .330	- 0		1461040	- .100	- .062	- .205 X.205	- .330	- 0
1461040	- .125	- .062	- .205	- .330	- 0		1461040	- .125	- .062	- .205 X.205	- .330	- 0
1461040	- .150	- .062	- .205	- .440	- 0		1461040	- .150	- .062	- .310 X.310	- .440	- 0
1461040	- .175	- .062	- .205	- .440	- 0		1461040	- .175	- .062	- .310 X.310	- .440	- 0
1461040	- .200	- .062	- .205	- .440	- 0		1461040	- .200	- .062	- .310 X.310	- .440	- 0
1461040	- .225	- .062	- .205	- .440	- 0		1461040	- .225	- .062	- .310 X.310	- .440	- 0
1461040	- .250	- .062	- .205	- .440	- 0		1461040	- .250	- .062	- .310 X.310	- .440	- 0
1461040	- .275	- .062	- .205	- .651	- 0		1461040	- .275	- .062	- .460 X.460	- .651	- 0
1461040	- .300	- .062	- .205	- .651	- 0		1461040	- .300	- .062	- .460 X.460	- .651	- 0
1461040	- .350	- .062	- .205	- .651	- 0		1461040	- .350	- .062	- .460 X.460	- .651	- 0
1461040	- .400	- .062	- .205	- .651	- 0		1461040	- .400	- .062	- .610 X.610	- .651	- 0
1461040	- .450	- .062	- .205	- .863	- 0		1461040	- .450	- .062	- .610 X.610	- .863	- 0
1461040	- .500	- .062	- .205	- .863	- 0		1461040	- .500	- .062	- .610 X.610	- .863	- 0
1461040	- .550	- .062	- .205	- .863	- 0		1461040	- .550	- .062	- .610 X.610	- .863	- 0
1461040	- .600	- .062	- .205	- 1.150	- 0		1461040	- .600	- .062	- .610 X.610	- 1.150	- 0

STYLE	HOLE DIA.	SLOT WIDTH	SLOT SIZE	FLANGE SIZE	COLOR		STYLE	HOLE DIA.	SLOT WIDTH	SLOT SIZE	FLANGE SIZE	COLOR
1461040	- .100	- .125	- .205	- .330	- 0		1461040	- .100	- .125	- .205 X.205	- .330	- 0
1461040	- .125	- .125	- .205	- .330	- 0		1461040	- .125	- .125	- .205 X.205	- .330	- 0
1461040	- .150	- .125	- .205	- .440	- 0		1461040	- .150	- .125	- .310 X.310	- .440	- 0
1461040	- .175	- .125	- .205	- .440	- 0		1461040	- .175	- .125	- .310 X.310	- .440	- 0
1461040	- .200	- .125	- .205	- .440	- 0		1461040	- .200	- .125	- .310 X.310	- .440	- 0
1461040	- .225	- .125	- .205	- .440	- 0		1461040	- .225	- .125	- .310 X.310	- .440	- 0
1461040	- .250	- .125	- .205	- .440	- 0		1461040	- .250	- .125	- .310 X.310	- .440	- 0
1461040	- .275	- .125	- .205	- .651	- 0		1461040	- .275	- .125	- .460 X.460	- .651	- 0
1461040	- .300	- .125	- .205	- .651	- 0		1461040	- .300	- .125	- .460 X.460	- .651	- 0
1461040	- .350	- .125	- .205	- .651	- 0		1461040	- .350	- .125	- .460 X.460	- .651	- 0
1461040	- .400	- .125	- .205	- .651	- 0		1461040	- .400	- .125	- .610 X.610	- .651	- 0
1461040	- .450	- .125	- .205	- .863	- 0		1461040	- .450	- .125	- .610 X.610	- .863	- 0
1461040	- .500	- .125	- .205	- .863	- 0		1461040	- .500	- .125	- .610 X.610	- .863	- 0
1461040	- .550	- .125	- .205	- .863	- 0		1461040	- .550	- .125	- .610 X.610	- .863	- 0
1461040	- .600	- .125	- .205	- 1.150	- 0		1461040	- .600	- .125	- .610 X.610	- 1.150	- 0

NOTE: ALL DIMENSIONS ARE +/- .005". STANDARD COLOR IS BLACK, PVC UL94V0 RATED, C73 DURO

MINIMUM PACKAGE IS 100PC, BULK PACK

SR PN	Hole Dia	Slot Thick	Slot Shape	Inner Flange shape	Color
1461040	- 150	- 062	- 205x205	- 330	- 0
ISC PN 1461040 - 150 - 062 - 205x205 - 330 - 0					