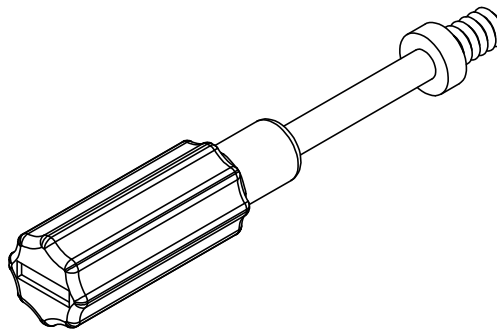
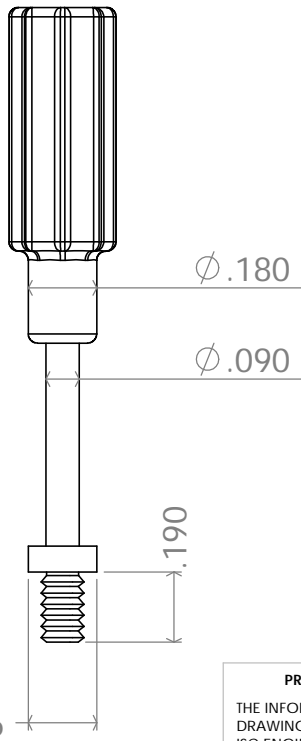
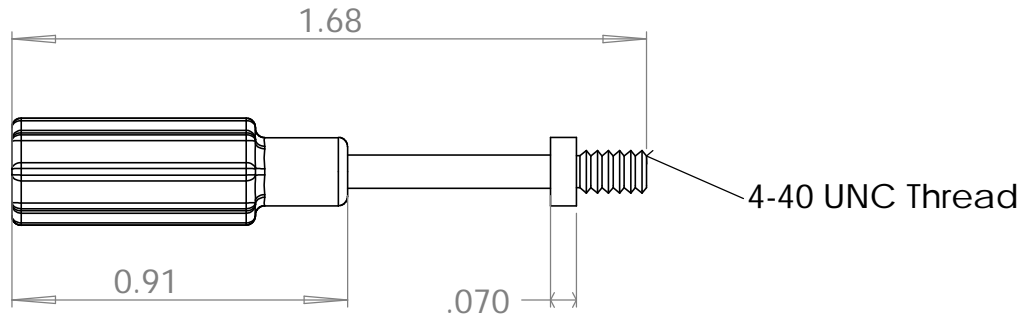
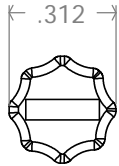


REVISIONS				
ZONE	REV.	DESCRIPTION	DATE	APPROVED



Material: Screw - Alloy Steel  
PVC - 94-V0 Rated, C73 Hardness

**PROPRIETARY AND CONFIDENTIAL**  
THE INFORMATION CONTAINED IN THIS DRAWING IS THE SOLE PROPERTY OF ISC ENGINEERING. ANY REPRODUCTION IN PART OR AS A WHOLE WITHOUT THE WRITTEN PERMISSION OF ISC ENGINEERING IS PROHIBITED.

DIMENSIONS ARE IN INCHES		NAME	DATE
TOLERANCES:		DRAWN	R FIERRO 08/30/01
FRACTIONAL ±		CHECKED	
ANGULAR: MACH ± BEND ±		ENG APPR.	
TWO PLACE DECIMAL ±		MFG APPR.	
THREE PLACE DECIMAL ±		Q.A.	
MATERIAL --		COMMENTS:	
NEXT ASSY	USED ON	FINISH --	
APPLICATION		DO NOT SCALE DRAWING	

ISC Engineering 157 Stare St Pomona, CA 91767 Ph: 909-596-3315 Fax: 909-596-3335 www.iscengineering.com		
<b>Molded JackScrew</b>		
SIZE <b>A</b>	DWG. NO. <b>1002103</b>	REV.
SCALE: 2:1	WEIGHT:	SHEET 1 OF 1